

**Revisions**

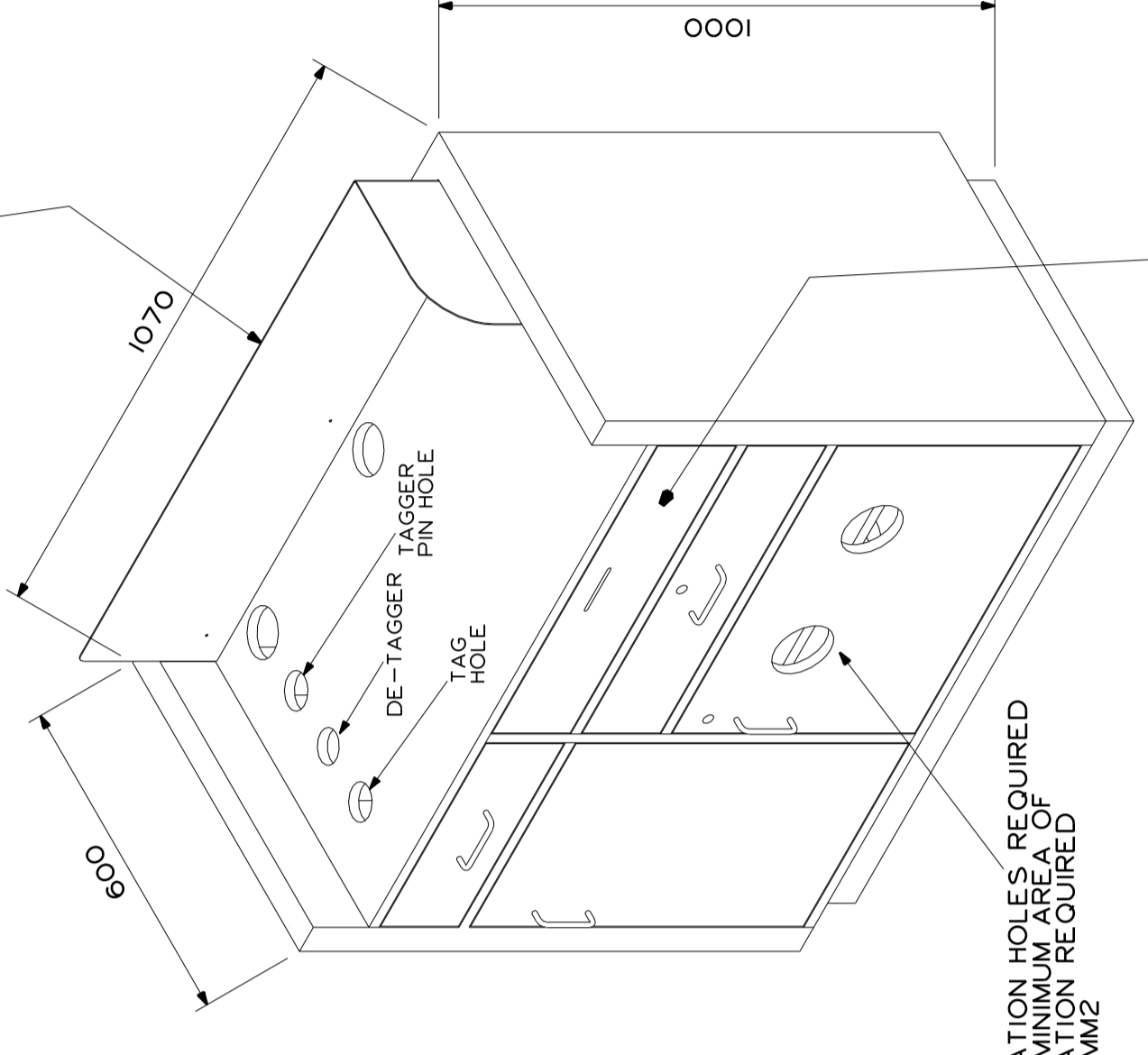
REV A :- OVERALL LENGTH OF UNIT INCREASED AND LAYOUT OF IT ITEMS INCREASED. ACCESS HATCH IN BASE INCREASED IN SIZE.  
A.MORRIS 07/04/08

REV B :- SIZE OF DE-TAGGER HOLE CHANGED FROM 36MM DIA TO 38MM DIA.  
A.MORRIS 22/04/08

THIS DRAWING IS DESIGNED TO GIVE TECHNICAL GUIDELINES RE SPECIFICATION NEEDED WITHIN A BRAND CASH WRAP UNIT TO ENSURE THAT THE HOF TILL KIT CAN BE ACCOMMODATED IN LINE WITH THE HOF DRIVE TO MANAGE CASH AND WRAPS AS KEY SITES FOR GIVING EXCELLENT SERVICE. WHICH CAN SELL STOCK FROM ANY AREA. THE FOLLOWING MUST ALSO BE TAKEN INTO CONSIDERATION WHEN PLANNING UNITS. ELEMENTS THAT DO NOT SUFFICIENTLY ACCOMMODATE THESE ELEMENTS WILL NOT BE APPROVED. TO INCLUDE ADEQUATE SPACE FOR THE FOLLOWING.

- 1/ FLAT SURFACE FOR FOLDING CLOTHING OR PACKING MULTIPLE PURCHASES. FOR BRANDS ON SMALL SPACE WHICH WILL ONLY OCCASIONALLY NEED THIS FUNCTION A FOLD OUT ELEMENT WITH SUITABLE SUPPORT CAN BE PROPOSED.
- 2/ CARRIER BAGS FOR BRAND
- 3/ SMALL NUMBER OF HOF GENERIC BAGS TO COVER ALL PURCHASES
- 4/ RUBBISH BIN (PROVIDED BY BRAND)
- 5/ HANGERS IF NOT REQUIRED BY CUSTOMERS
- 6/ ADMINISTRATIVE ITEMS - E.G. PENS, STAPLER, ACCOUNT OPENING FORMS - KEPT OUT OF SIGHT OF CUSTOMER.

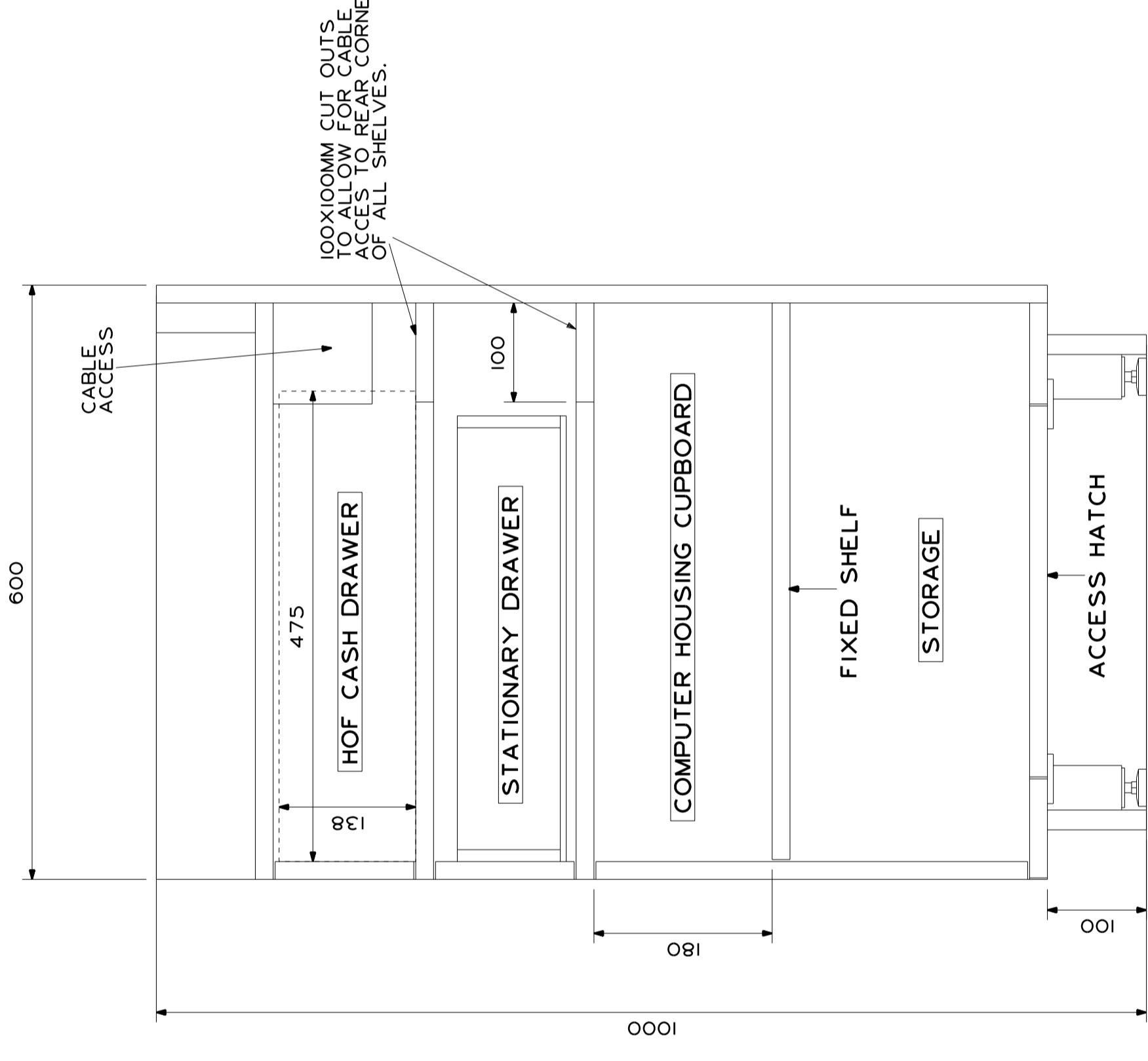
SHROUD OR SIMILAR ELEMENT IS STRONGLY SUGGESTED TO COVER TILL EQUIPMENT. HEIGHT TO BE MINIMUM 250MM. SHOULD BE PLANNED TO ACCOMMODATE LEFT OR RIGHT HANDED TILL SET UP AS APPROPRIATE.



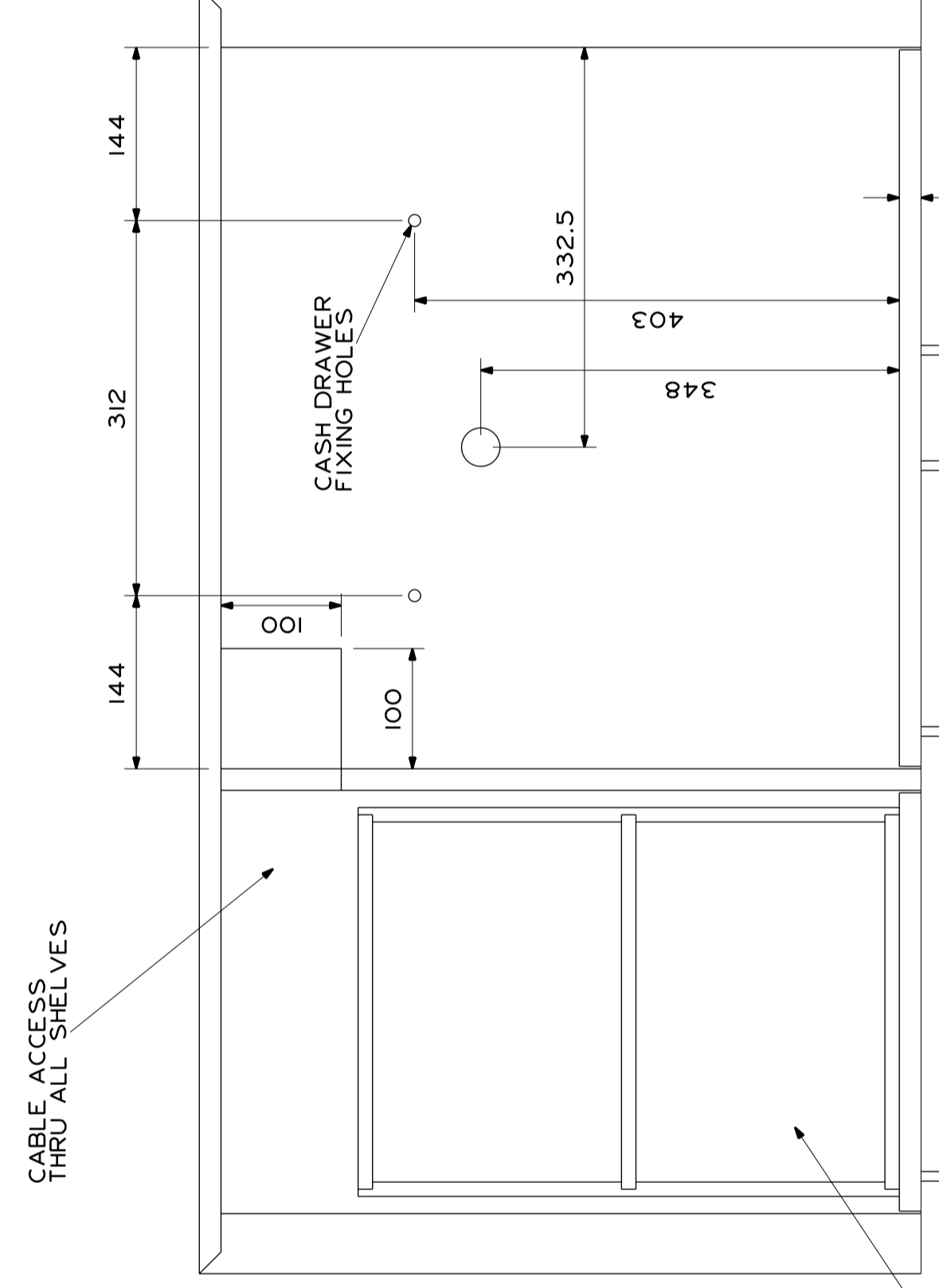
AXONOMETRIC

DRAWER FRONT CAN BE FITTED ONTO THE TILL DRAWER FRONT TO GIVE A MORE FINISHED APPEARANCE BUT THE FOLLOWING MUST APPLY.

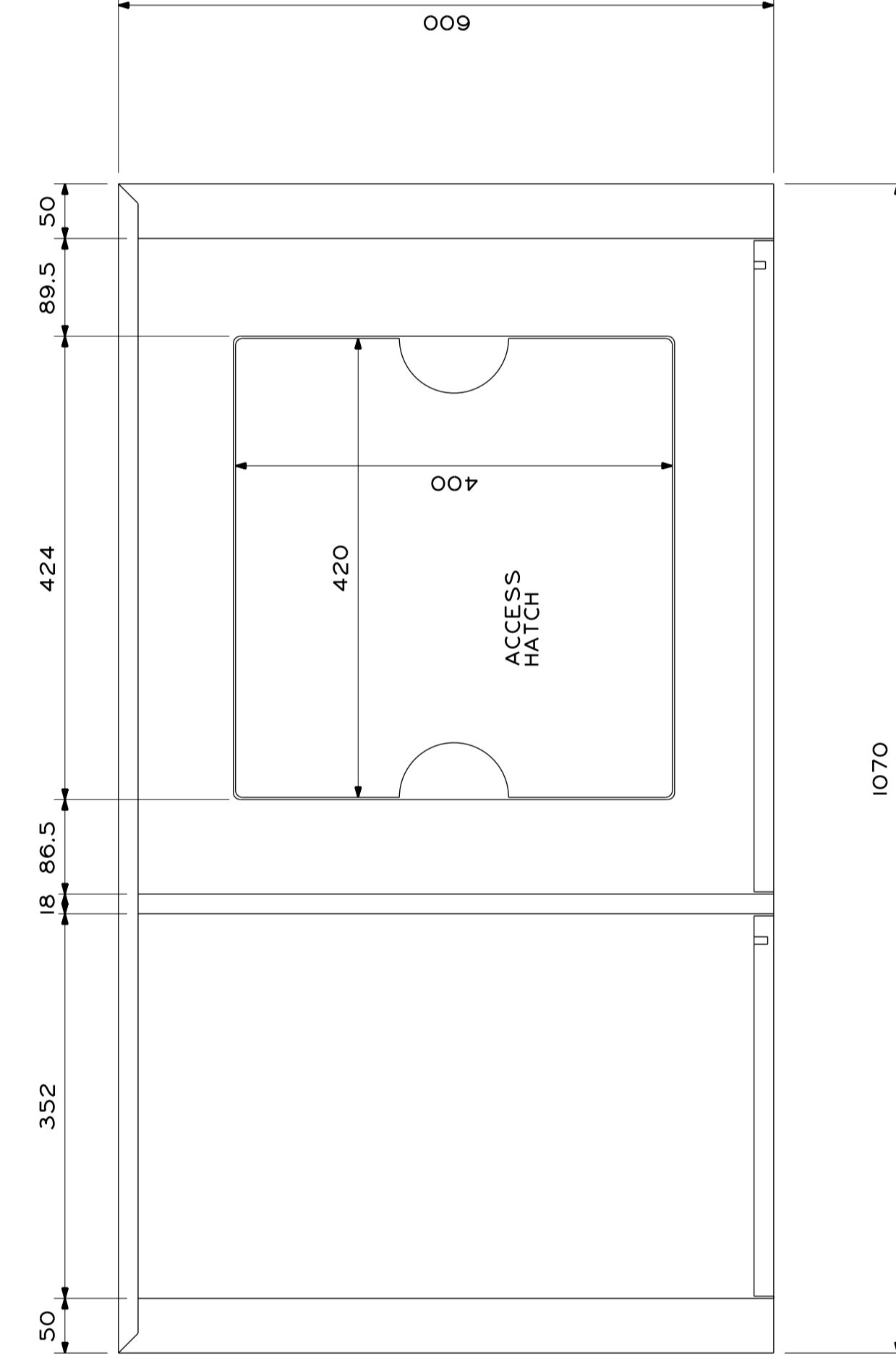
- 1/ FIXING TO CORRELATE WITH PRE-DRILLED HOLES IN THE DRAWER. FITTED WITH 3MM WASHERS TO ENSURE ADDITIONAL DRAWER FRONT DOES NOT HIT THE CARCASS AS DRAWER IS CLOSED BY STAFF.
- 2/ A SLOT FOR CHEQUES TO DIMENSIONS GIVEN MUST ALSO BE INCORPORATED.
- 3/ THE FIXING MUST BE COMPLETED BY BRANDS SHOPFITTERS SO CO-ORDINATION WITH IT TEAM ON SITE IS REQUIRED TO ENSURE DRAWER IS IN PLACE TO ALLOW FITTING BEFORE LEAVING SITE.



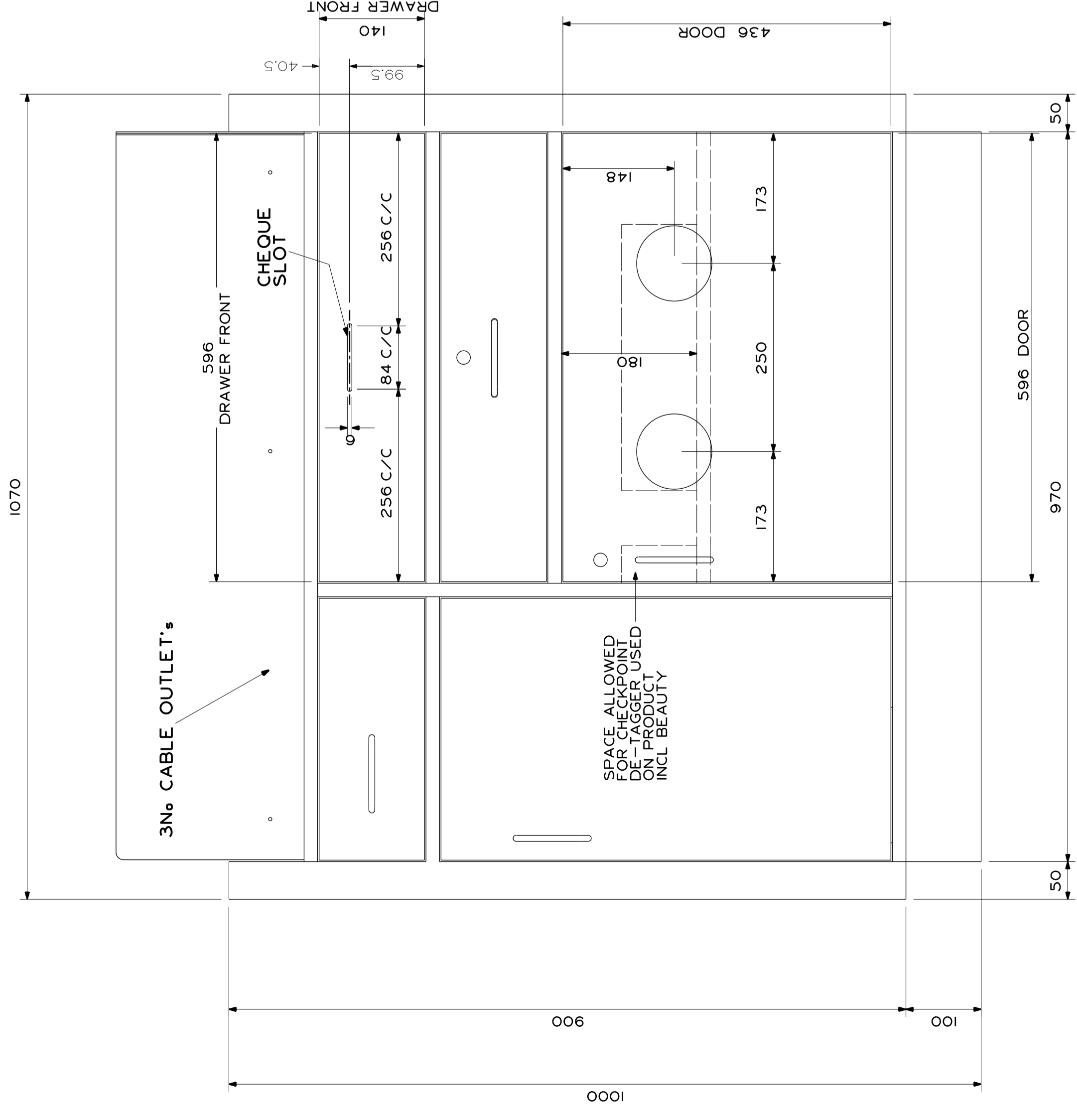
SECTION THROUGH TILL SECTION



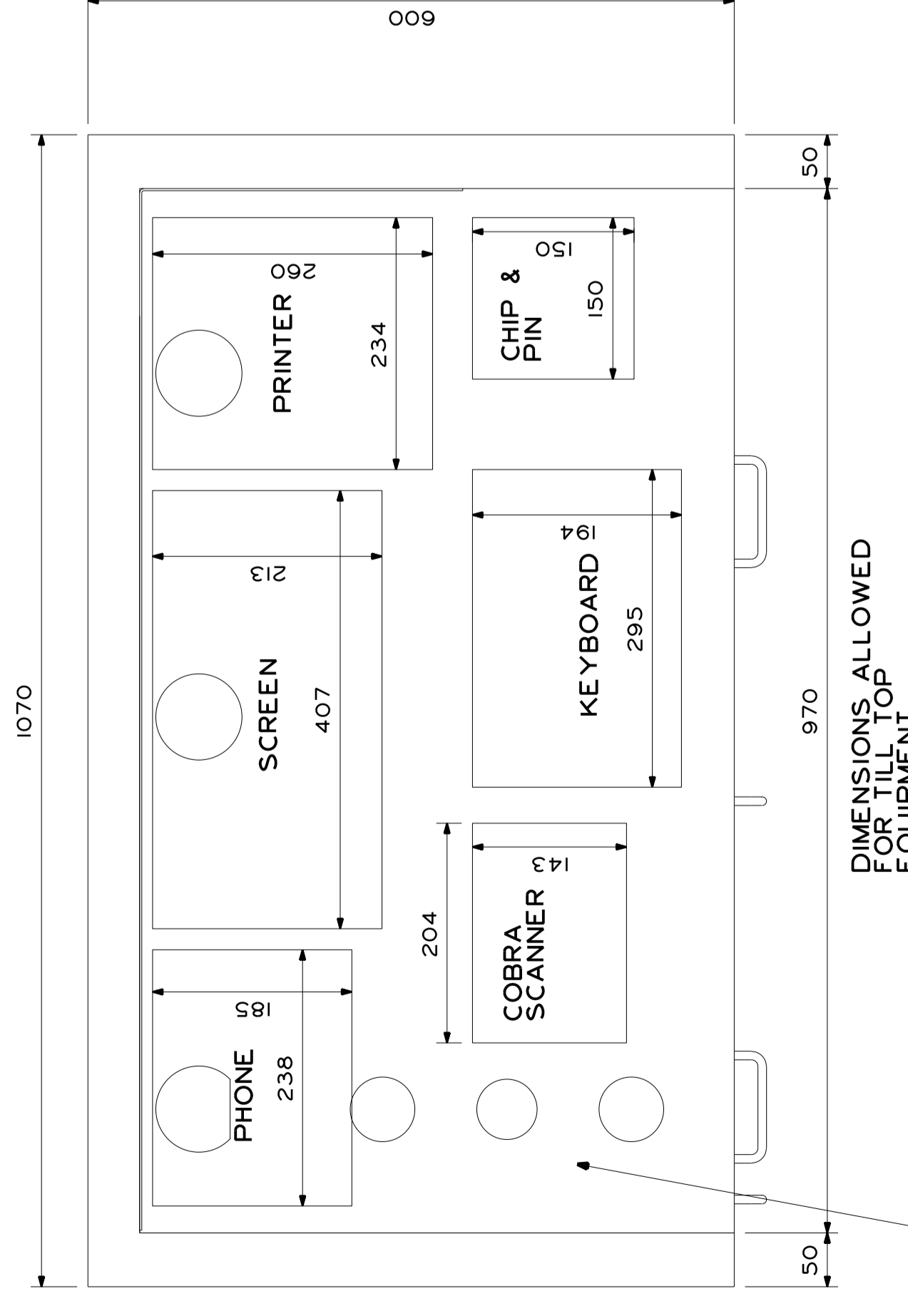
SECTIONAL PLAN THRU HOF CASH DRAWER



SECTIONAL PLAN THRU LOWER CUPBOARDS

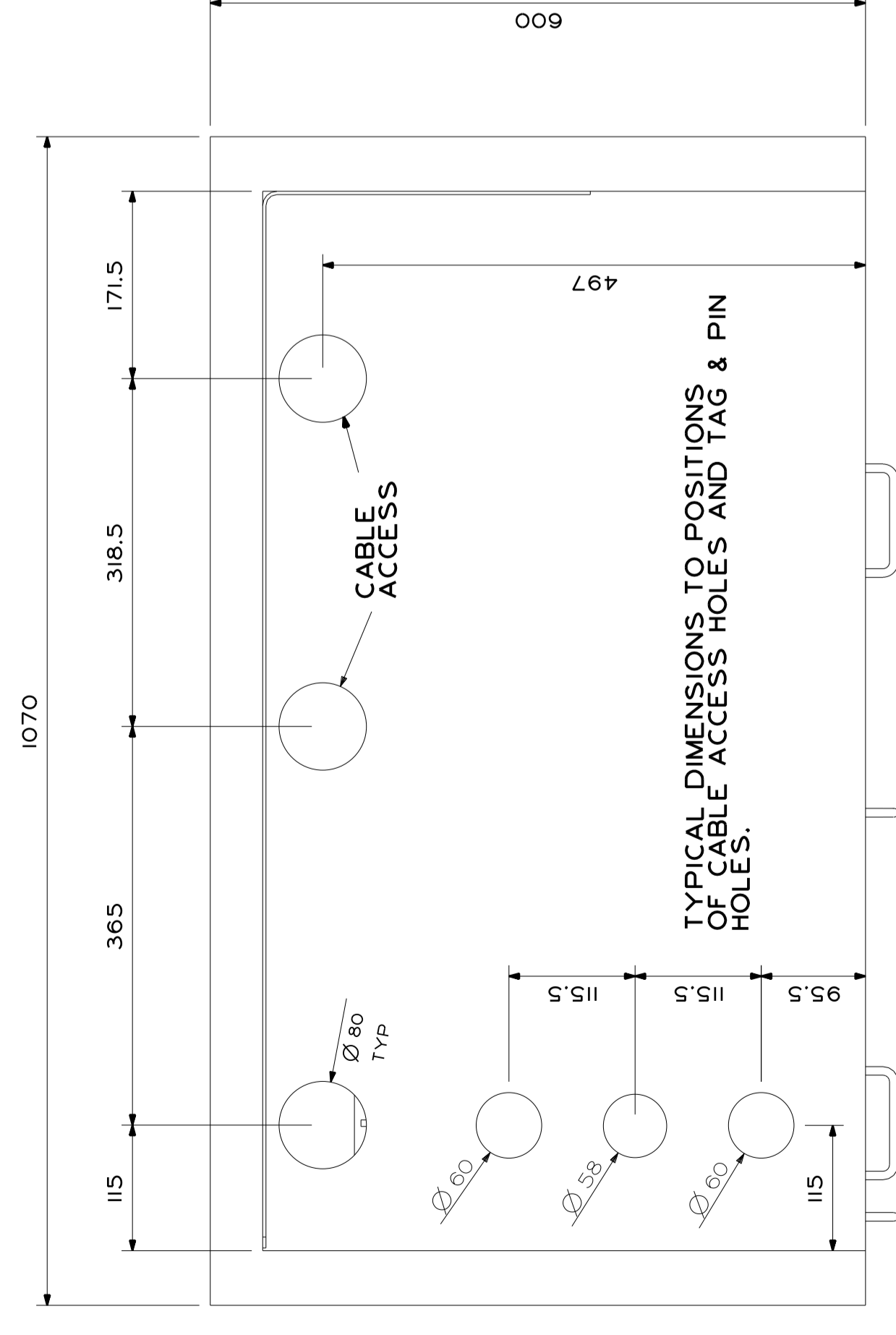


REAR ELEVATION



PLAN DETAIL

CORRECTLY SIZED HOLES MUST BE PROVIDED FOR DE-TAGGERS. THIS PROPORTION BETWEEN DE-TAGGERS CAN BE ADJUSTED AS LONG AS OPERATIONALLY MANAGEABLE.



PLAN SECTION

LAYOUT WITHIN DRAWERS SHOULD PROVIDE SEPARATE COMPARTMENTS FOR THE REMOVED FROM STOCK

VENTILATION HOLES REQUIRED TOTAL MINIMUM AREA OF 151600MM²

**HAVELOCK EUROPA PLC**

GROUP HEAD OFFICE  
ROSSWAY  
HILLEND INDUSTRIAL PARK  
DALGETY BAY  
FIFE KY11 9JS  
SCOTLAND  
TELEPHONE 01441 01383 820044  
FAX 01441 01383 820064

WESTWAY  
HILLEND INDUSTRIAL PARK  
DALGETY BAY  
FIFE KY11 9HE  
TELEPHONE 01441 01383 823636  
FAX 01441 01383 824749

SWANWICK COURT  
APRILTON  
LEICESTERSHIRE LE12 7AS  
ENGLAND  
TELEPHONE 01441 01773 543300  
FAX 01441 01773 543301

Client: HOUSE OF FRASER  
Project: STANDARD FURNITURE

Title: TILL SPEC FOR BRANDS AT BRISTOL & WHITE CITY

Scale: 1:10 & 1:5  
Drawn By: C.GRONKOWSKI  
Approved By:  
Drawing No: HOF\_TILL\_1  
Drawing Rev: B

These drawings are the property of Havelock Europa PLC  
© copyright Havelock Europa PLC dated 08/02/08

ALL SCREWED AND KD JOINTS TO BE GLUED UNLESS OTHERWISE STATED.  
GEN TOL +0 -1  
DO NOT SCALE